

Black Box Tech Support: FREE! Live. 24/7.

Tech support the
way it should be.



Great tech support is just 20 seconds away
at 724-746-5500 or blackbox.com.



About Black Box

Black Box Network Services is your source for more than 118,000 networking and infrastructure products. You'll find everything from cabinets and racks and power and surge protection products to media converters and Ethernet switches all supported by free, live 24/7 Tech support available in 20 seconds or less.

© Copyright 2009. All rights reserved.

Wireless Video Presentation System II Quick Start Guide

Transform your wired projector into a high-end wireless projector.

Includes plug-and-show, 4-to-1 split screen, and PDA wireless projection features.



Customer Support Information

Order toll-free in the U.S.: Call 877-877-BBOX (outside U.S. call 724-746-5500) • FREE technical support 24 hours a day, 7 days a week: Call 724-746-5500 or fax 724-746-0746 • Mailing address: Black Box Corporation, 1000 Park Drive, Lawrence, PA 15055-1018
Web site: www.blackbox.com • E-mail: info@blackbox.com

Quick Start Guide

What's Included

Your package should include the following items. If anything is missing or damaged, contact Black Box Technical Support at 724-746-5500.

- Wireless Presentation Adapter
- This printed Quick Start Guide
- User's manual on flash drive
- Token
- Antenna
- Power supply

What You Need to Supply

- Projector
- VGA cable

Getting Started

Follow the steps in this Quick Start Guide to get started with the Wireless Video Presentation System II (WVPS) (AC1131A). For more information, please refer to the user's manual PDF on the flash drive that you received with your AC1131A.

1. Connect the projector's VGA cable to the WVPS box's VGA connector and power on the projector. See Figure 1.

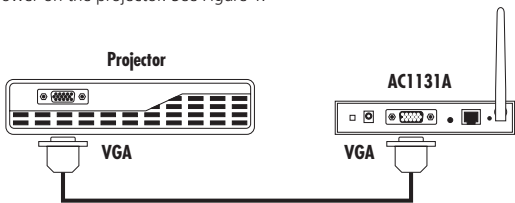


Figure 1. Connecting a projector to the Wireless Presentation Adapter.

Wireless Video Presentation System II Quick Start Guide

2. Turn on the WVPS box. The projector displays the default menu on the screen shown in Figure 2.

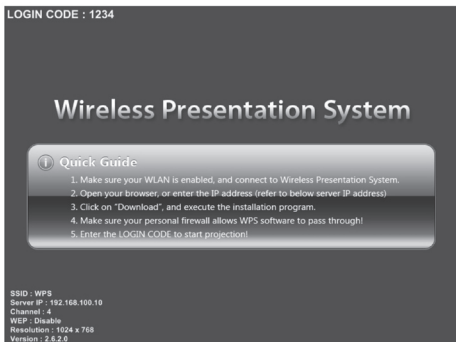


Figure 2. Default menu.

3. Make sure that your PC WLAN is enabled, and connect your PC to the WVPS box.

Wireless Video Presentation System II Quick Start Guide

4. Open your browser. It will redirect you to the WVPS main page automatically, or you can enter the IP address to access the WVPS Web home page. The default IP address is 192.168.100.10 and refers to the IP address shown on the left corner of the projector screen.

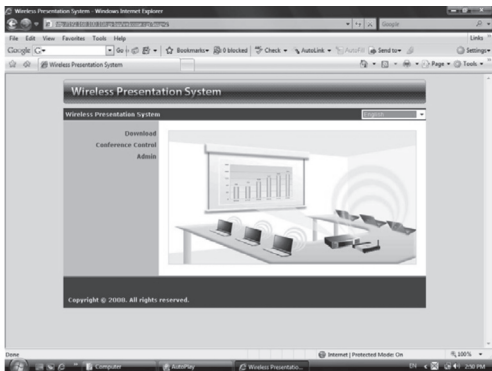


Figure 3.

Wireless Video Presentation System II Quick Start Guide

5. Download the client software. Select "Windows® Vista/ XP/2000" or "Windows Mobile 5.0" and run the installation program. After the program installs, a WVPS shortcut appears on the PC screen.

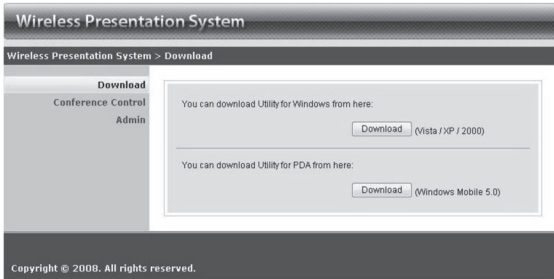


Figure 4. Client software download screen.

Wireless Video Presentation System II Quick Start Guide

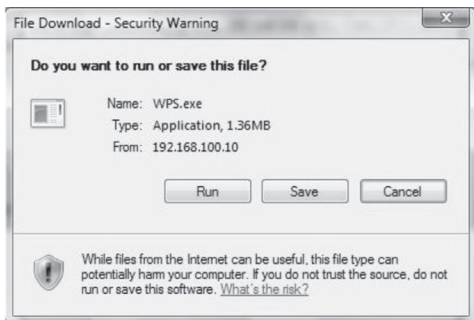


Figure 5. Run or save file screen.

6. Make sure your personal firewall allows WVPS software to pass through.
7. Enter the LOGIN CODE. You will see the login code on the projector screen.



Figure 6. Login code screen.

Wireless Video Presentation System II Quick Start Guide

8. Click on the “Play” button to start projection.



Figure 7. Play button.

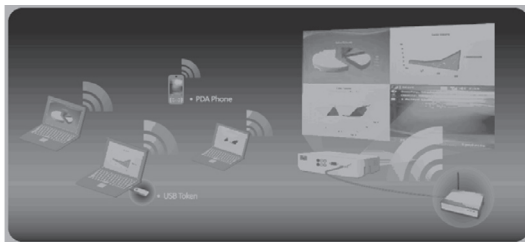


Figure 8. Client utility.

TRADEMARKS USED IN THIS MANUAL

Black Box and the Double Diamond logo are registered trademarks of BB Technologies, Inc.

Windows Vista/XP/2000 and Windows Mobile 5.0 are registered trademarks of Microsoft Corporation.

Any other trademarks mentioned in this manual are acknowledged to be the property of the trademark owners.