

ServSwitch™ Multiuser Quick Start Guide

Extends your KVM from PS/2 or USB servers up to 100 feet (30 m) away.

Two users can control, monitor, and manage up to 16 or 32 servers simultaneously.

Compatible monitors include VGA, SVGA, XGA, and UXGA and higher.

Use with Windows® Linux®, and other major operating systems.



Customer Support Information

Order toll-free in the U.S.: Call 877-877-BBOX (outside U.S. call 724-746-5500) • FREE technical support 24 hours a day, 7 days a week: Call 724-746-5500 or fax 724-746-0746 • Mailing address: Black Box Corporation, 1000 Park Drive, Lawrence, PA 15055-1018
Web site: www.blackbox.com • E-mail: info@blackbox.com

TRADEMARKS USED IN THIS MANUAL

Black Box and the Double Diamond logo are registered trademarks, and ServSwitch is a trademark, of BB Technologies, Inc.

Mac is a registered trademark of Apple Computer, Inc.

PS/2 is a registered trademark of International Business Machines Corporation.

Linux is a registered trademark of Linus Torvalds.

Windows is a registered trademark of Microsoft Corporation.

Novell is a registered trademark of Novell, Inc.

Solaris and Sun are registered trademarks of Sun Microsystems, Inc.

Any other trademarks mentioned in this manual are acknowledged to be the property of the trademark owners.

ServSwitch Multiuser Quick Start Guide

1. Introduction

All references throughout this guide to the KVM2016A also apply to the KVM2032A. The two units are functionally the same. The KVM2016A has 16 server ports, and the KVM2032A has 32 server ports.

The KVM2016A extends your KVM (keyboard, video, and mouse) from servers with PS/2® or USB interfaces up to 100 feet (30 m) away. Two users can control, monitor, and manage up to 16 servers simultaneously. You can connect a Power Distribution Unit (PDU) for power management.

2. System Components

The system consists of:

- KVM2016A or KVM2032A
- Rackmounting kit
- Power cord
- This printed Quick Start Guide
- A User's Manual on CD-ROM

3. Compatibility

The KVM2016A is compatible with:

- PS/2 or USB interface computers/servers
- VGA, SVGA, or XGA monitors (UXGA and higher)
- Windows®, Linux®, and other major operating systems

4. The ServSwitch Unit

4.1 Front Panel

Figure 1 illustrates the front panel of either the KVM2016A or the KVM2032A. Table 1 describes its components.

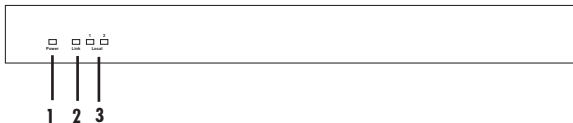


Figure 1. KVM2016A or KVM2032A front panel.

Table 1. Front panel components.

Number	Component	Description
1	Power LED	Lights when unit is powered on
2	Link LED	Lights when the unit is connected to the network
3	Local LEDs	Lights when the corresponding user is administering a target

4.2 Back Panel

Figures 2 and 3 illustrate the KVM2016A and KVM2032A back panels and Table 2 describes their components.

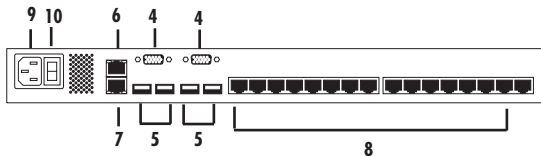


Figure 2. KVM2016A's back panel.

ServSwitch Multiuser Quick Start Guide

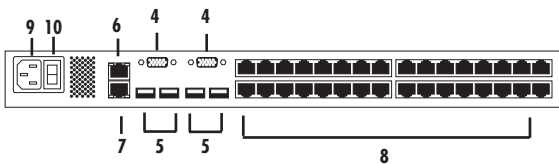


Figure 3. KVM2032A's back panel.

Table 2. Back panel components.

Number	Component	Description
4	User 1 and User 2 HD15 connectors	Connect (2) KVM consoles for (2) users to operate the ServSwitch
5	User 1 and User 2 USB Type A connectors	Connect keyboards and mice for (2) users to operate the ServSwitch
6	RJ-45 connector for RPS port	Serial remote power switch port (reserved for future use)
7	RJ-45 connector for Config port	Connect to 10/100 Mbps Ethernet to configure and update the unit
8	(16) or (32) RJ-45 server ports	Link to servers via SAMs
9	Power connector	Connect 120 VAC power
10	I/O power switch	Turns power on or off

5. Pre-Installation Guidelines

- Place cables away from fluorescent lights, air conditioners, and machines that are likely to generate electric noise.
- Place the ServSwitch Multiuser on a flat, clean, and dry surface or install it in a rack.
- Make sure that the maximum distance between each computer and the ServSwitch doesn't exceed 100 feet (30 m).

To rackmount the ServSwitch, refer to its user's manual.

6. Connecting the System

Figure 4 illustrates the ServSwitch Multiuser system overview.

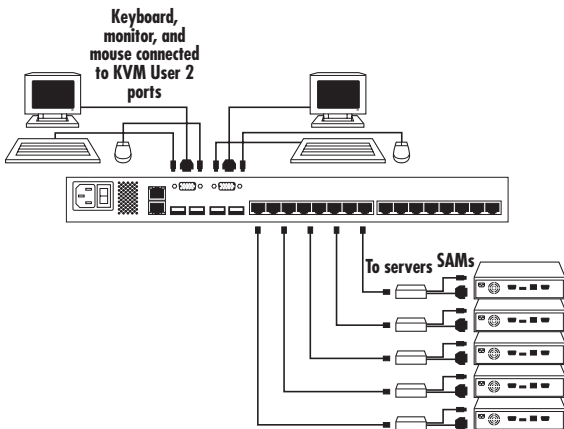


Figure 4. ServSwitch Multiuser system overview.

6.1 The SAMs

Each computer/server is directly connected to the ServSwitch Multiuser via the appropriate SAM using CAT5 cable in a star configuration. No external power is needed at the SAMs. They draw their power from the computer's keyboard port (SAM PS/2) or from the USB port (SAM USB). Figures 5 and 6 show the SAM PS/2 and the SAM USB.

ServSwitch Multiuser Quick Start Guide

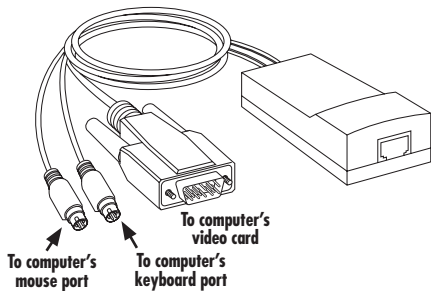


Figure 5. SAM PS/2 (KV1120A).

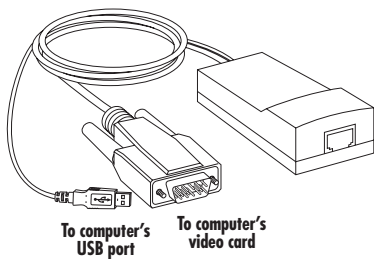


Figure 6. SAM USB (KV1121A).

ServSwitch Multiuser Quick Start Guide

6.2 Connecting a SAM PS/2

You can connect the SAM PS/2 to a powered on computer in the following order (see Figure 7):

1. Connect the mouse connector to the computer's mouse port.
2. Connect the keyboard connector to the computer's keyboard port.
3. Connect the screen connector to the computer's video port.

If you don't follow the order listed above when connecting while the server is running, the mouse may not function correctly until you reboot the server.

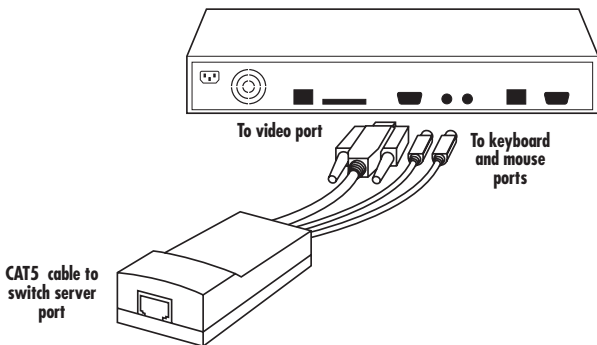


Figure 7. SAM PS/2 connections (KV1120A).

6.3 Connecting a SAM USB

The SAM USB supports Windows 98 SE and later, Mac®, Sun®, and SGI, and all modern Linux distributions. Figure 8 shows the SAM USB.

To connect the SAM USB:

1. Connect the screen connector to the computer's video port.
2. Connect the USB connector to the computer's USB port.

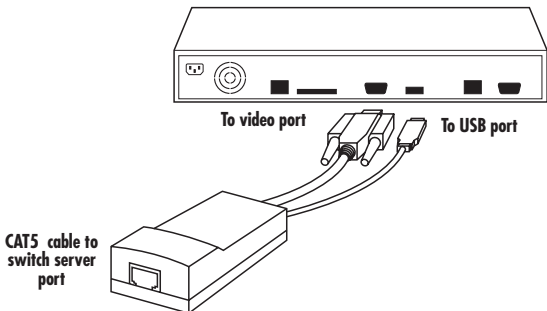


Figure 8. SAM USB (KV1121A).

6.4 Connecting the CAT5 Cables

1. Attach one connector to the SAM's RJ-45 port.
2. Connect the other connector to one of the ServSwitch Multiuser's server ports.
3. Repeat steps 1 and 2 for each computer.

6.5 Connecting the Two KVM Consoles

Connect a keyboard, monitor, and mouse to the user 1 and user 2 ports as follows:

1. Connect the monitor connectors to the monitor ports.
2. Connect the keyboard connectors to the keyboard ports.
3. Connect the mouse connectors to the mouse ports.

6.6 Connecting to the Power Supply

1. Using the included power cord, connect the ServSwitch Multiuser to a socket outlet that has a grounding connection. Use only the power cord you received with the unit.
2. Switch on the unit.

7. Configuring the System

Configuring the system includes assigning server names, user and security settings, and maintenance.

7.1 Connecting to the Local Area Network (LAN)

Configure the unit via a Web interface. Connect a network cable to the LAN port of the ServSwitch Multiuser.

7.2 Setting Network Parameters via the OSD

By default, the ServSwitch Multiuser boots with an automatically assigned IP address from a Dynamic Host Configuration Protocol (DHCP) server on the network. The DHCP server provides a valid IP address, gateway address, and subnet mask.

You can identify the IP address from the OSD. Where there is no DHCP server, set the IP address via the OSD as follows:

1. From the local keyboard, press left Shift twice. The OSD Main window appears. See Figure 9.

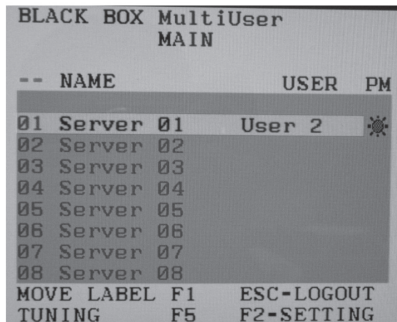


Figure 9. Main menu.

2. Press F2. The Settings window appears. See Figure 10.

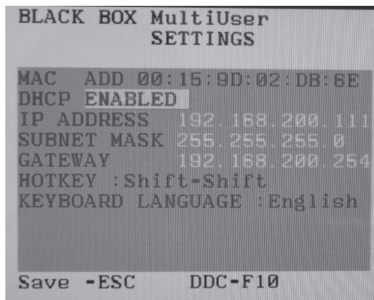


Figure 10. Settings window.

Using the Tab key, navigate downwards in the Settings window. At the bottom of the window, press the Tab key to go to the top of the window. To change settings, type in the selected area or press the spacebar.

8. Web Configuration

1. Open your Web browser.
2. Type the ServSwitch Multiuser unit's system IP address: `http` or `https://IP address/` and press Enter. The login page appears.
3. Type the default administrator user name—`admin`—and password—`access`—(both lower case).
4. Press Enter. The Web interface opens at the Targets page. See Figure 11.

admin: Targets		
Server Name	Server Status	User
File Server	Off	
KVManager	On	
Windows 2003	On	
ESX 3i 3.5	On	
Windows XP	On	
Server 06	On	
Novell SuSE	On	
Server 08	Off	
Server 09	Off	
Server 10	Off	
Server 11	Off	
Server 12	Off	
Server 13	Off	
Server 14	Off	
Server 15	Off	
Server 16	Off	

Figure 11. Targets page.

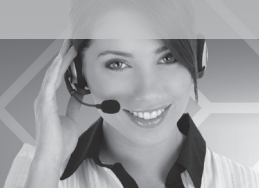
9. Configuring the System

Configure the system via a Web interface. First, connect a network cable to the ServSwitch unit's LAN port. Then, power on the ServSwitch.

For system configuration and operation, see the user's manual.

Black Box Tech Support: FREE! Live. 24/7.

Tech support the
way it should be.



Great tech support is just 20 seconds away
at 724-746-5500 or blackbox.com.



About Black Box

Black Box Network Services is your source for more than 118,000 networking and infrastructure products. You'll find everything from cabinets and racks and power and surge protection products to media converters and Ethernet switches all supported by free, live 24/7 Tech support available in 20 seconds or less.

© Copyright 2010. All rights reserved.